

Hendrick A

1986 SQ FT

447 41 Avenue



- 3 bedrooms, 2.5 bathrooms
- Second floor laundry room
- Built-in computer desk
- Walk-in pantry with upgraded French door with opaque glass
- 9' ceiling basement and main floor
- Side entry for future legal suite
- Rough-ins for future legal suite
- Double sink in the ensuite
- Luxury vinyl plank flooring on main floor
- Carpet with 8-pound underlay
- Full height ceramic backsplash
- Cabinets raised to ceiling
- Quartz countertops throughout
- Fireplace with backing for future TV mount
- Railing throughout with metal spindles
- Rough-in in the basement for future bathroom
- 6-piece appliance package (washer, dryer, fridge, OTR, dishwasher, range)
- Sealed driveway
- "Hotbox" system in garage for development above
- Stone to front elevation
- Stockton glass inserts for garage door
- Modern light fixtures and hardware

Maple Crest Showhome

416 42 Avenue NW, Edmonton, AB.

587.521.7744

maplecrestsales@bedrockhomes.ca

Job # MPC-0-034357 Lot 4, Block 18, Plan 162-3032

Notes:

bedrockhomes.ca

VISIT US AT ANY OF OUR SHOWHOMES!

Monday - Thursday 3-8pm, Weekends & Holidays 12-5PM

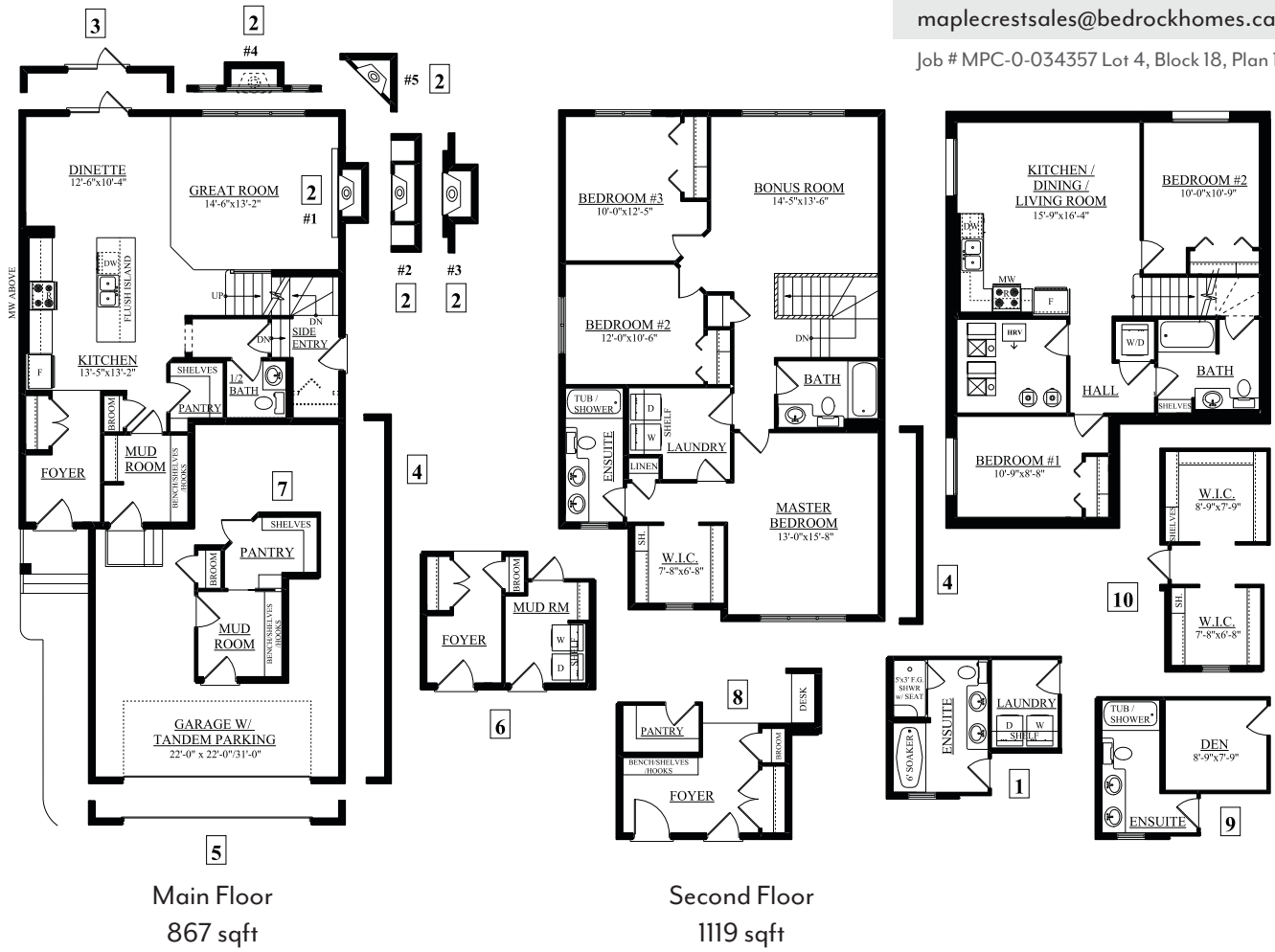


Hendrick A
 1986 SQ FT
 447 41 Avenue



Maple Crest Showhome
 416 42 Avenue NW, Edmonton, AB.
 587.521.7744
 maplecrestsales@bedrockhomes.ca

Job # MPC-0-034357 Lot 4, Block 18, Plan 162-3032



bedrockhomes.ca

VISIT US AT ANY OF OUR SHOWHOMES!
 Monday - Thursday 3-8pm, Weekends & Holidays 12-5PM

